

**POST**

Post tables offer some classic and unique table top shapes, that are great for focused or group activities for training room spaces. It has additional lower heights for children's applications and two leg designs of square or round legs.



24" SQUARE CAFÉ TABLE



48X72" CONFERENCE TABLE

**ORDERING INFORMATION**

- |                          |                               |
|--------------------------|-------------------------------|
| 1) Series Name           | 6) Laminate Selection and No. |
| 2) Model Number          | 7) Edge Style Code and Color  |
| 3) Size                  | 8) Optional Items             |
| 4) Quantity              |                               |
| 5) Leg Powder Coat Color |                               |

**BASE SPECIFICATIONS**

**Café Legs:** The Post leg is made with 2", 14 gauge steel tubing. Round leg is standard, square leg is optional.

**Conference Legs:** The Post Conference leg is made with 3", 14 gauge round steel tubing.

**Plate:** 2" x 4" or 8" x 8" stamped metal plate

**Glides:** Adjustable steel glides

**Assembly:** Post base is a completely welded one piece base, no tie-rod assembly. The top plate is welded to the vertical column. Base mounts to tabletop with ¼-20 x 1" machine screws into metal inserts in top; NO WOOD SCREWS ARE USED. For tables over 72" in length, two heavy duty steel stretcher bars are provided.

**STANDARD BASE FINISHES**

**Round Leg:** Standard Powder Coat

**OPTIONAL BASE FINISHES**

**Round Leg:** Polished Chrome

**Square Leg:** Standard Powder Coat



ROUND LEG

**TABLE TOP SPECIFICATIONS**

**Table Tops**

Table top core is CARB Phase I & Phase II Compliant. Laminate, wood veneer and phenolic backing are glued with water based adhesives.

**Easy-Fold Mechanism**

Lightweight, heavy-duty, and very easy to operate. On folding models, lightweight designer-styled mechanism offers soft visual aesthetics ("non-industrial look"), consists of a nylon injection molded housing, cast aluminum pivot and metal locking slider. Rigid, taper locking design is activated by single lever that also locks in folded position. Legs fold flat and can be stored horizontally. ANSI/BIFMA tested. Round legs are only available on folding.

**COLOR / EDGE SELECTIONS**

**Laminate/Veneer Selections**

ERG offers over 1000 standard laminate choices from Nevamar, Wilsonart, Formica and Pionite. Wood veneer is available in transparent stain colors - custom stain matching available for an upcharge.

**Edge Selections**

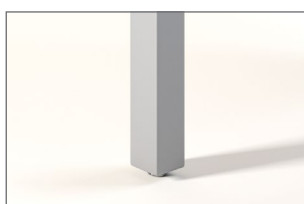
ERG offers a wide variety of table top edge materials including PVC, wood, aluminum and resin/urethane.

**Special Edge Note:** When ganging or butting tables together, ERG recommends using 3MM flat edge or flat wood edge. Square tables using **T-MOLD** edge will have a 3" radius on all corners.

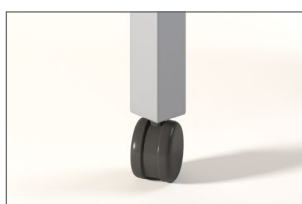
## OPTIONS

- CODE: SL - 2" Square Post Legs
- CODE: CAS3 - 3" Locking Casters - Black
- CODE: GD3 - Flat Ganging Device for Café & Training Tables
- CODE: STH - Special Table Height (other than 29")
- CODE: PC - Polished Chrome Legs (round leg only)
- CODE: RAD - 3" Radius Corners for 3MM Edge
- CODE: SLG - Self-Leveling Glide
- CODE: COT - Oval table top
- CODE: CBT - Boat table top
- CODE: CAT - Almost Rectangle Table Top

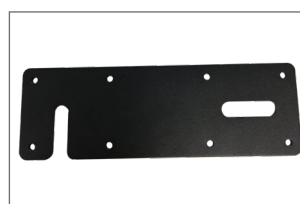
Note: When ordering modesty panel, table and panel must have 3MM edge.



SQUARE LEG



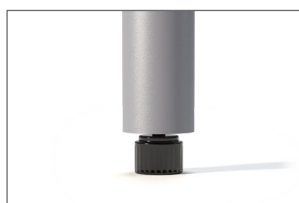
BLACK LOCKING CASTERS



FLAT GANGING DEVICE



POLISHED CHROME LEGS



SELF LEVELING GLIDE

## OPTIONAL CONFERENCE TABLE SHAPES



OVAL TOP  
CODE: COT



BOAT TOP  
CODE: CBT



ALMOST RECTANGLE TOP  
CODE: CAT


 48" ALMOST SQUARE CAFÉ TABLE  
 SHOWN WITH OPTIONAL SQUARE LEGS

**MODEL / DESCRIPTION / LIST PRICING**
**POST | CAFÉ | ROUND**

**ROUND**

Model Number	TableTop Size	Number of Legs	Table Height	Shpg. Wght	LAMINATE TOP ASSORTED EDGES								VENEER TOP	
					GRP1	GRP2	GRP3	GRP4	GRP5	GRP6	GRP7	GRP8	GRP9	
PT24D	24"Dia.	4	29"	32	\$805	\$819	\$840	\$915	\$1064	\$1191	\$1343	\$1916	\$2211	
PT30D	30"Dia.	4	29"	43	\$1026	\$1042	\$1074	\$1173	\$1373	\$1539	\$1741	\$2454	\$2816	
PT36D	36"Dia.	4	29"	53	\$1100	\$1125	\$1172	\$1294	\$1535	\$1736	\$1981	\$2689	\$3028	
PT42D	42"Dia.	4	29"	72	\$1300	\$1335	\$1430	\$1607	\$1958	\$2252	\$2605	\$3309	\$3586	
PT48D	48"Dia.	4	29"	86	\$1502	\$1540	\$1664	\$1875	\$2303	\$2660	\$3087	\$3859	\$4139	
PT54D	54"Dia.	4	29"	101	\$1809	\$1857	\$2016	\$2287	\$2827	\$3278	\$3819	\$4690	\$4976	
PT60D	60"Dia.	4	29"	118	\$1961	\$2016	\$2213	\$2526	\$3150	\$3673	\$4298	\$5162	\$5402	

**POST | CAFÉ | SQUARE**

**SQUARE**

Model Number	TableTop Size	Number of Legs	Table Height	Shpg. Wght	LAMINATE TOP ASSORTED EDGES								VENEER TOP	
					GRP1	GRP2	GRP3	GRP4	GRP5	GRP6	GRP7	GRP8	GRP9	
PT24S	24"Sq.	4	29"	40	\$946	\$959	\$970	\$1051	\$1206	\$1337	\$1494	\$2211	\$2596	
PT2430S	24x30Sq.	4	29"	49	\$994	\$1008	\$1034	\$1126	\$1309	\$1461	\$1645	\$2359	\$2728	
PT30S	30"Sq.	4	29"	54	\$1026	\$1042	\$1074	\$1173	\$1373	\$1539	\$1741	\$2454	\$2816	
PT36S	36"Sq.	4	29"	67	\$1100	\$1125	\$1172	\$1294	\$1535	\$1736	\$1981	\$2689	\$3028	
PT42S	42"Sq.	4	29"	90	\$1336	\$1366	\$1460	\$1636	\$1990	\$2283	\$2634	\$3376	\$3674	
PT48S	48"Sq.	4	29"	107	\$1567	\$1605	\$1723	\$1936	\$2364	\$2720	\$3146	\$3445	\$3825	
PT54S	54"Sq.	4	29"	126	\$1809	\$1857	\$2016	\$2287	\$2827	\$3278	\$3819	\$4690	\$4976	
PT60S	60"Sq.	4	29"	148	\$1961	\$2016	\$2213	\$2526	\$3150	\$3673	\$4298	\$5162	\$5402	

**POST | CAFÉ | ALMOST SQUARE**

**ALMOST SQUARE TOP**

Model Number	TableTop Size	Number of Legs	Table Height	Shpg. Wght	LAMINATE TOP ASSORTED EDGES								VENEER TOP	
					GRP1	GRP2	GRP3	GRP4	GRP5	GRP6	GRP7	GRP8	GRP9	
PT48AS	48" x 48"	4	29"	107	NA	\$2028	\$2239	\$2563	NA	\$3752	\$4400	\$4478	\$4757	
PT54AS	54" x 54"	4	29"	126	NA	\$2269	\$2523	\$2900	NA	\$4287	\$5043	\$5900	\$6067	
PT60AS	60" x 60"	4	29"	148	NA	\$2493	\$2798	\$3235	NA	\$4839	\$5712	\$6564	\$6662	

**OPTIONS**

Add upcharge to list price and code to model number

CAS3	3" Locking Casters - Black	\$35	ea.
GD3	Flat Ganging Device for Café & Training Tables	\$150	per pair
STH	Special Table Height (other than 29")	\$69	per leg

SL	Square Leg/Column	\$147	per leg
PC	Polished Chrome (round leg only)	\$94	per leg
RAD	3" Radius Corners for 3MM Edge	\$272	per table
SLG	Self-Leveling Glide	\$11	per glide



30X60" RECTANGLE TRAINING TABLE  
SHOWN WITH OPTIONAL CASTERS AND  
SQUARE LEGS

**MODEL / DESCRIPTION / LIST PRICING**

**POST | TRAINING | RECTANGLE**



RECTANGLE

Model Number	TableTop Size	Number of Legs	Table Height	Shpg. Wght	LAMINATE TOP ASSORTED EDGES							VENEER TOP	
					GRP1	GRP2	GRP3	GRP4	GRP5	GRP6	GRP7	GRP8	GRP9
PT2448	24X48	4	29"	70	\$1124	\$1143	\$1187	\$1304	\$1539	\$1736	\$1973	\$2721	\$3085
PT2460	24X60	4	29"	79	\$1174	\$1198	\$1251	\$1384	\$1647	\$1868	\$2132	\$2875	\$3226
PT2472	24X72	4	29"	88	\$1321	\$1347	\$1406	\$1554	\$1847	\$2088	\$2378	\$3231	\$3634
PT2484	24X84	4	29"	97	\$1520	\$1552	\$1628	\$1802	\$2150	\$2444	\$2795	\$3745	\$4180
PT2496	24X96	4	29"	106	\$1860	\$1894	\$1978	\$2168	\$2547	\$2864	\$3242	\$4228	\$4674
PT3048	30X48	4	29"	79	\$1146	\$1171	\$1230	\$1364	\$1629	\$1852	\$2119	\$2827	\$3152
PT3060	30X60	4	29"	118	\$1206	\$1235	\$1308	\$1458	\$1760	\$2009	\$2312	\$3019	\$3322
PT3072	30X72	4	29"	147	\$1432	\$1463	\$1536	\$1705	\$2038	\$2316	\$2650	\$3537	\$3940
PT3084	30X84	4	29"	113	\$1646	\$1681	\$1778	\$1980	\$2378	\$2714	\$3114	\$4098	\$4531
PT3096	30X96	4	29"	158	\$1962	\$2002	\$2112	\$2331	\$2766	\$3128	\$3567	\$4549	\$4960
PT3660	36X60	4	29"	131	\$1385	\$1415	\$1502	\$1673	\$2016	\$2304	\$2650	\$3463	\$3813
PT3672	36X72	4	29"	163	\$1458	\$1492	\$1593	\$1784	\$2169	\$2490	\$2874	\$3683	\$4013
PT3684	36X84	4	29"	129	\$1661	\$1702	\$1826	\$2058	\$2517	\$2900	\$3359	\$4235	\$4569
PT3696	36X96	4	29"	176	\$1985	\$2033	\$2176	\$2427	\$2928	\$3345	\$3844	\$4720	\$5028

**OPTIONS**

Add upcharge to list price and code to model number

CAS3	3" Locking Casters - Black	\$35	ea.
GD3	Flat Ganging Device for Café & Training Tables	\$150	per pair
STH	Special Table Height (other than 29")	\$69	per leg

SL	Square Leg/Column	\$147	per leg
PC	Polished Chrome (round leg only)	\$94	per leg
RAD	3" Radius Corners for 3MM Edge	\$272	per table
SLG	Self-Leveling Glide	\$11	per glide



BOOMER TABLE

**MODEL / DESCRIPTION / LIST PRICING**
**POST | TRAINING | TILTED SQUARE**

 TILTED  
SQUARE

Model Number	Table Top Size	Number of Legs	Table Height	Shpg. Wght	LAMINATE TOP EDGES		
					2B	3A	6Q
PTTSQ	36" x 52"	4	29"	85	\$1339	\$1574	\$1773

**POST | TRAINING | BOWED TRAPEZOID**

 BOWED  
TRAPEZOID

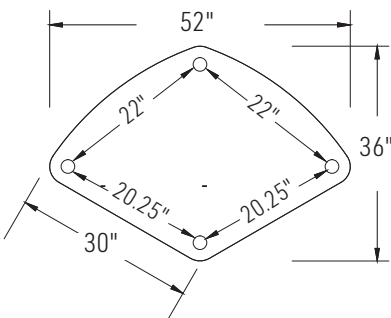
Model Number	Table Top Size	Number of Legs	Table Height	Shpg. Wght	LAMINATE TOP EDGES		
					2B	3A	6Q
PTTZD	28" x 60"	4	29"	90	\$1357	\$1596	\$1801

**POST | TRAINING | BOOMER**

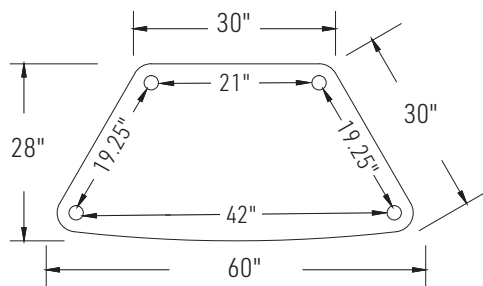

BOOMER

Model Number	Table Top Size	Number of Legs	Table Height	Shpg. Wght	LAMINATE TOP EDGES		
					2B	3A	6Q
PTBMR	42" x 66"	5	29"	102	\$1643	\$1922	\$2160

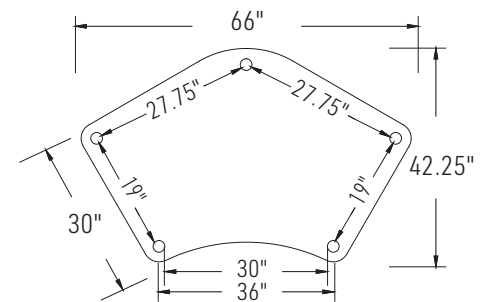
Note: These special shapes are available in 3 edge choices only.



TILTED SQUARE



TRAPEZOID



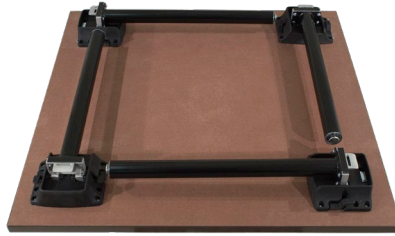
BOOMER

**OPTIONS**

Add upcharge to list price and code to model number

CAS3	3" Locking Casters - Black	\$35	ea.
GD3	Flat Ganging Device for Café & Training Tables	\$150	per pair
STH	Special Table Height (other than 29")	\$69	per leg

SL	Square Leg/Column	\$147	per leg
PC	Polished Chrome (round leg only)	\$94	per leg
SLG	Self-Leveling Glide	\$11	per glide



SQUARE FOLDING TABLE

**MODEL / DESCRIPTION / LIST PRICING**
**POST | FOLDING | ROUND**


ROUND

Model Number	Table Top Size	Number of Legs	Table Height	Shpg. Wght	LAMINATE TOP ASSORTED EDGES							VENEER TOP	
					GRP 1	GRP 2	GRP 3	GRP 4	GRP 5	GRP 6	GRP 7	GRP 8	GRP 9
PF48D	48" Dia.	4	29"	114	\$2751	\$2817	\$2833	\$2984	\$3444	\$3827	\$4288	\$6301	\$7376
PF54D	54" Dia.	4	29"	129	\$2774	\$2844	\$2856	\$3012	\$3487	\$3880	\$4352	\$6365	\$7432
PF60D	60" Dia.	4	29"	147	\$3124	\$3220	\$3308	\$3531	\$4196	\$4749	\$5415	\$7404	\$8374

**POST | FOLDING | SQUARE**


SQUARE

Model Number	Table Top Size	Number of Legs	Table Height	Shpg. Wght	LAMINATE TOP ASSORTED EDGES							VENEER TOP	
					GRP 1	GRP 2	GRP 3	GRP 4	GRP 5	GRP 6	GRP 7	GRP 8	GRP 9
PF42S	42" Sq.	4	29"	113	\$2565	\$2621	\$2594	\$2716	\$3075	\$3375	\$3733	\$5756	\$6888
PF48S	48" Sq.	4	29"	130	\$2706	\$2770	\$2772	\$2916	\$3354	\$3716	\$4152	\$6162	\$7256
PF54S	54" Sq.	4	29"	149	\$2900	\$2976	\$3021	\$3201	\$3743	\$4193	\$4733	\$6737	\$7771
PF60S	60" Sq.	4	29"	171	\$3157	\$3257	\$3354	\$3581	\$4260	\$4834	\$5518	\$7509	\$8463

**POST | FOLDING | RECTANGLE**


RECTANGLE

Model Number	Table Top Size	Number of Legs	Table Height	Shpg. Wght	LAMINATE TOP ASSORTED EDGES							VENEER TOP	
					GRP 1	GRP 2	GRP 3	GRP 4	GRP 5	GRP 6	GRP 7	GRP 8	GRP 9
PF3060	30 X 60	4	29"	106	\$2755	\$2822	\$2840	\$2989	\$3455	\$3839	\$4303	\$6314	\$7390
PF3072	30 X 72	4	29"	118	\$2853	\$2925	\$2961	\$3133	\$3649	\$4077	\$4589	\$6599	\$7646
PF3084	30 X 84	4	29"	147	\$3029	\$3122	\$3191	\$3397	\$4011	\$4521	\$5139	\$7134	\$8127
PF3096	30 X 96	4	29"	158	\$3326	\$3419	\$3501	\$3713	\$4349	\$4884	\$5524	\$7517	\$8496
PF3660	36 X 60	4	29"	118	\$2895	\$2973	\$3017	\$3198	\$3735	\$4187	\$4727	\$6731	\$7766
PF3672	36 X 72	4	29"	131	\$3005	\$3095	\$3161	\$3358	\$3957	\$4458	\$5060	\$7056	\$8056
PF3684	36 X 84	4	29"	163	\$3150	\$3249	\$3341	\$3567	\$4246	\$4810	\$5489	\$7480	\$8439
PF3696	36 X 96	4	29"	176	\$3509	\$3617	\$3733	\$3980	\$4719	\$5334	\$6071	\$8059	\$8982

Detail of Folding Mechanism



Note: Folding legs are only available with round column.

**OPTIONS**

Add upcharge to list price and code to model number

CAS3	3" Mobile Casters	\$35	ea.
GD3	Flat Ganging Device for Café & Training Tables	\$150	per pair
STH	Special Table Height (other than 29")	\$69	per leg

PC	Polished Chrome (round leg only)	\$94	per leg
RAD	3" Radius Corners for 3MM Edge	\$272	per table
SLG	Self-Leveling Glide	\$11	per glide

**MODEL / DESCRIPTION / LIST PRICING**
**POST|CONFERENCE|RECTANGLE**

**RECTANGLE**

Model Number	Table Top Size	Number of Legs	Table Height	Shpg. Wght	LAMINATE TOP ASSORTED EDGES								VENEER TOP	
					GRP1	GRP2	GRP3	GRP4	GRP5	GRP6	GRP7	GRP8	GRP9	
PC4272	42X72	4	29"	207	\$2789	\$2948	\$3133	\$3704	\$5063	\$5419	\$6135	\$9259	\$11780	
PC4284	42X84	4	29"	234	\$2981	\$3157	\$3377	\$4019	\$5544	\$5948	\$6750	\$10051	\$12685	
PC4296	42X96	4	29"	262	\$3423	\$3618	\$3873	\$4589	\$6278	\$6723	\$7613	\$11089	\$13846	
PC4872	48X72	4	29"	220	\$2924	\$3095	\$3304	\$3926	\$5398	\$5786	\$6564	\$9809	\$12412	
PC4884	48X84	4	29"	234	\$3312	\$3505	\$3743	\$4445	\$6115	\$6556	\$7436	\$11112	\$14058	
PC4896	48X96	4	29"	280	\$3770	\$3983	\$4256	\$5037	\$6886	\$7372	\$8350	\$12216	\$15291	
PC48108*	48X108	6	29"	310	N/A	\$4370	\$4673	\$5527	\$7556	\$8091	\$9158	\$13440	\$16846	
PC48120*	48X120	6	29"	340	N/A	\$4599	\$4936	\$5870	\$8077	\$8659	\$9823	\$14292	\$17825	
PC48144*	48X144	6	29"	380	N/A	\$5379	\$5768	\$6844	\$9410	\$10087	\$11439	\$16735	\$20933	
PC6096	60X96	4	29"	316	\$4135	\$4384	\$4724	\$5640	\$7808	\$8376	\$9516	\$13719	\$17018	
PC60108*	60X108	6	29"	351	N/A	\$4909	\$5299	\$6330	\$8785	\$9431	\$10722	\$15449	\$19161	
PC60120*	60X120	6	29"	385	N/A	\$5168	\$5602	\$6722	\$9384	\$10081	\$11482	\$16424	\$20280	
PC60144*	60X144	6	29"	410	N/A	\$6237	\$6749	\$8091	\$11274	\$12114	\$13790	\$19849	\$24592	

\* Asterisk after model number indicates 2 piece tops with center seam for tables over 96"

**POST|CONFERENCE|RACETRACK**

**RACETRACK**

Model Number	Table Top Size	Number of Legs	Table Height	Shpg. Wght	LAMINATE TOP ASSORTED EDGES								VENEER TOP	
					GRP1	GRP2	GRP3	GRP4	GRP5	GRP6	GRP7	GRP8	GRP9	
PC4272RT	42X72	4-3"	29"	207	\$3164	\$3355	\$3609	\$4317	\$5997	\$6440	\$7326	\$10794	\$13539	
PC4284RT	42X84	4-3"	29"	234	\$3352	\$3566	\$3857	\$4633	\$6479	\$6968	\$7941	\$11578	\$14447	
PC4296RT	42X96	4-3"	29"	262	\$3543	\$3774	\$4098	\$4947	\$6963	\$7492	\$8552	\$12370	\$15353	
PC4872RT	48X72	4-3"	29"	220	\$3294	\$3502	\$3779	\$4537	\$6336	\$6807	\$7753	\$11339	\$14173	
PC4884RT	48X84	4-3"	29"	250	\$3681	\$3911	\$4219	\$5059	\$7052	\$7576	\$8626	\$12644	\$15819	
PC4896RT	48X96	4-3"	29"	280	\$4250	\$4512	\$4876	\$5831	\$8104	\$8699	\$9895	\$14205	\$17578	
PC48108RT*	48X108	6-3"	29"	310	N/A	\$4858	\$5244	\$6263	\$8680	\$9316	\$10587	\$15276	\$18962	
PC48120RT*	48X120	6-3"	29"	340	N/A	\$5088	\$5510	\$6601	\$9200	\$9886	\$11254	\$16127	\$19940	
PC48144RT*	48X144	6-3"	29"	380	N/A	\$5865	\$6337	\$7579	\$10534	\$11312	\$12869	\$18571	\$23048	
PC6096RT	60X96	4-3"	29"	316	\$4577	\$4874	\$5298	\$6375	\$8926	\$9600	\$10944	\$15556	\$19129	
PC60108RT*	60X108	6-3"	29"	351	N/A	\$5397	\$5872	\$7064	\$9908	\$10654	\$12154	\$17288	\$21273	
PC60120RT*	60X120	6-3"	29"	385	N/A	\$5573	\$6077	\$7334	\$10318	\$11103	\$12672	\$17955	\$22041	
PC60144RT*	60X144	6-3"	29"	410	N/A	\$7361	\$8061	\$9774	\$13851	\$14919	\$17065	\$24060	\$29436	

\* Asterisk after model number indicates 2 piece tops with center seam for tables over 96"

**OPTIONS**

Add upcharge to list price and code to model number

GD3	Flat Ganging Device for Café & Training Tables	\$150	per pair
COT	Oval table top - add to rectangle top price	add 20%	
CBT	Boat table top - add to rectangle top price	add 25%	
PC	Polished Chrome (round leg only)	\$94	per leg

STH	Special Table Height (other than 29")	\$69	per leg
RAD	Radius Corners for 3MM Edge	\$272	per table
CAT	Almost Rectangle table top	add 25%	
SLG	Self-Leveling Glide	\$11	per glide



POST JR. 30" SQUARE TABLE



POST JR. 30" ROUND TABLE

## ORDERING INFORMATION

- |                 |                               |
|-----------------|-------------------------------|
| 1) Series Name  | 5) Powder Coat Paint Color    |
| 2) Model Number | 6) Laminate Selection and No. |
| 3) Size         | 7) Edge Style Code and Color  |
| 4) Quantity     | 8) Optional Items             |

## BASE SPECIFICATIONS

**Legs:** The Post Jr. leg is made with 2", 14 gauge round steel tubing.

**Plate:** 2" x 4" stamped metal plate

**Glides:** Adjustable steel glides

**Assembly:** Post base is a completely welded one piece base, no tie-rod assembly. The top plate is welded to the vertical column. Base mounts to tabletop with 1/4"-20 x 1" machine screws into metal inserts in top; NO WOOD SCREWS ARE USED.

## STANDARD BASE FINISHES

**Metal Legs:** Standard Powder Coat

## TABLE TOP SPECIFICATIONS

### Table Tops

Table top core is CARB Compliant 1.25" particle board. Laminate and phenolic backing are glued with water based adhesives.

## COLOR / EDGE SELECTIONS

### Laminate/Veneer Selections

ERG offers over 1000 standard laminate choices from Nevamar, Wilsonart, Formica and Pionite. Wood veneer is available in transparent stain colors - custom stain matching available for an upcharge.

### Edge Selections

ERG offers a wide variety of table top edge materials including PVC, wood, aluminum and resin/urethane.

**Special Edge Note:** When ganging or butting tables together, ERG recommends using 3MM flat edge or flat wood edge. Square tables using **T-MOLD** edge will have a 3" radius on all corners.

## OPTIONS

- CODE: CAS3 - 3" Black Locking Casters
- CODE: GD - Flat Ganging Device for Café & Training Tables
- CODE: STH - Special Table Height (other than 20" or 24")
- CODE: SLG - Self-Leveling Glide
- CODE: RAD - 3" Radius Corners for 3MM Edge



BLACK LOCKING CASTERS





24"H X 36" ROUND POST JR SHOWN WITH  
KAYDEN JR CHAIRS, 13" SEAT HEIGHT



20"H X 30" SQ POST JR SHOWN WITH  
18" MIA OTTOMANS, 13" SEAT HEIGHT

## MODEL / DESCRIPTION / LIST PRICING

### POST|JUNIOR|SQUARE



**SQUARE**

Model Number	Table Top Size	Number of Legs	Table Height	Shpg. Wght	LAMINATE TOP ASSORTED EDGES			
					GRP1	GRP2	GRP3	GRP4
1357	30"x30"	4	20"	48	\$1114	\$1170	\$1256	\$1773

### POST | JUNIOR | ROUND



**ROUND**

Model Number	Table Top Size	Number of Legs	Table Height	Shpg. Wght	LAMINATE TOP ASSORTED EDGES			
					GRP 1	GRP 2	GRP 3	GRP 4
1358	30" D	4	20"	40	\$1101	\$1157	\$1242	\$1748
1359	36" D	4	24"	50	\$1170	\$1236	\$1422	\$2020

## OPTIONS

Add upcharge to list price and code to model number

CAS3	Black Locking Casters	35	ea.
GD3	Flat Ganging Device for Café & Training Tables	150	per pair
STH	Special Table Height (other than 20" or 24")	69	per leg

SLG	Self-Leveling Glide	11	per glide
RAD	3" Radius Corners for 3MM Edge	\$272	per table