

ASHTON

The Ashton collection of lounges, modular and bench units, are great for common spaces to form into a multitude of different configurations. Ashton has a transitional look, that offers the option to add tablet tables, casters, and a backside handgrip to the lounge units, making these seats great for mobility and changing up the configuration.



ASHTON SINGLE SEAT LOUNGE WITH UPHOLSTERED ARMS

ORDERING INFORMATION

To Order Please Specify:

- 1) Series Name
- 2) Model Number
- 3) Quantity
- 4) Stain Color for Arm Caps
- 5) Frame Color
- 6) Fabric Grade & Number
- 7) Optional Items

SOFT SEATING	WEIGHT LIMIT
1 Seat	500 lbs.
2 Seat	1000 lbs.
3 Seat	1500 lbs.

STANDARD BASE FINISHES

Metal Leg: Standard Powder Coat

GENERAL SPECIFICATIONS

Upholstery / Foam

Seat and back are covered in choice of fabric, vinyl, crypton, leather or COM. ERG uses only water based glues and adhesives in our upholstery process. Contrasting fabrics are available. All foam is fully bonded to frame. Seat cushions are 5" graded high resiliency (H.R.) block foam, covered entirely with special bonded polyester fiber to protect final upholstery.

Frame:

Frame Construction - Frame assembly is constructed of multi-ply hardwood, with tongue and groove construction. No sag-springs are installed in seat & back along with interlocking helicoil springs to prevent sagging and provide additional lower back and seat support. Each modular unit consists of two individual components bolted together.

Fixed Post: Standard powder coat colors

Metal Handle Grip Colors: Available in standard powder coat or polished chrome

Arm: Ashton Lounge is available with square upholstered arm and standard wood stain

Base Details

Metal Legs: Ashton metal legs are 1.5" diameter, 14 gauge steel tubing welded to a top flange. Each leg has a factory installed black nylon glide.

Glides

All benches are standard with factory installed black nylon glides.

OPTIONS

- CODE: FR - CAL 133 (TB 133) Fire Retardant
- CODE: MB - Moisture Barrier (up to 60" overall width)
- CODE: MB60 - Moisture Barrier (over 60" overall width)
- CODE: SBH - Special Height.
- CODE: 2FO - Two Fabric Upholstery Option
- CODE: GD2 - Flat Ganging Device for Soft Seating
- CODE: CAS3 - 3" Locking Casters - Black
- CODE: AHG - Metal Hand Grip (Powder Coat or Polished Chrome)
- CODE: TABF-() - Fixed Post Tablet (outside, specify (L/R), shape A, B or C)
- CODE: TAB-() - Non-Removable Swivel Tablet
(laminated shape A, B or C specify left or right arm)
- CODE: SST - Solid Surface Tablet Arm (add to Tablet option)
- CODE: LAM5 - Non-standard laminate for 5 or less tablets
see options for upcharge
- CODE: SS5 - Non-standard Solid Surface top for 5 or less tablets

Note: Factory installed power/data available, See accessories online under the 'Products' tab



FIXED POST TABLET



METAL HAND GRIP



ELECTRICAL/DATA

DIMENSIONS	Single Seat	Two Seat	Three Seat
Seat Width:	22"	44"	66"
Seat Depth:	20"	20"	20"
Seat Height:	17.5"	17.5"	17.5"
Back Height:	33"	33"	33"
Overall Width:	22"	44"	66"
Overall Depth:	28"	28"	28"
Qty./Wt.:	1 ea./50 lbs.	1 ea./110 lbs.	1 ea./135 lbs.



TWO SEAT LOUNGE



SINGLE SEAT LOUNGE WITH CASTERS AND HAND GRIP

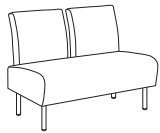
MODEL / DESCRIPTION / LIST PRICING



606 Single Seat Lounge

COM Yardage: 3 Yds. / Back: 1.5 Yds. / Seat: 1.5 Yds.

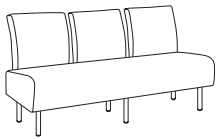
COM	GR1	GR2	GR3	GR4	GR5	GR6	GR7	GR8	GR9	GR10	LEA
\$1796	\$1920	\$1997	\$2080	\$2159	\$2247	\$2338	\$2431	\$2528	\$2630	\$2734	\$3231



608 Two Seat Lounge

COM Yardage: 6 Yds. / Back: 3 Yds. / Seat: 3 Yds.

COM	GR1	GR2	GR3	GR4	GR5	GR6	GR7	GR8	GR9	GR10	LEA
\$3099	\$3319	\$3452	\$3590	\$3731	\$3881	\$4034	\$4198	\$4367	\$4541	\$4723	\$5582



610 Three Seat Lounge

COM Yardage: 9 Yds. / Back: 4.5 Yds. / Seat: 4.5 Yds.

COM	GR1	GR2	GR3	GR4	GR5	GR6	GR7	GR8	GR9	GR10	LEA
\$3997	\$4275	\$4445	\$4624	\$4808	\$5002	\$5199	\$5408	\$5624	\$5850	\$6084	\$7192

TABLET SHAPES

Three Tablet Shapes::

Choose from the three shapes shown and specify; A, B or C and left or right (outside tablet) when ordering.

Example: TABF-(A) Left - this would be a fixed shape A tablet on the left side (when seated).

Laminate Top:

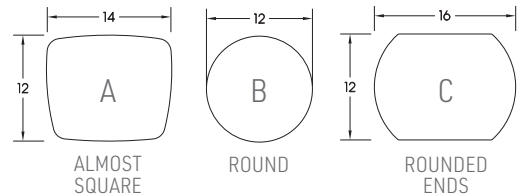
Tablet orders of 5 or less have 4 standard laminate colors:

- Wilsonart Black 1595-60
- Wilsonart Montana Walnut 7110K-78
- Formica Brite White 459-58
- Nevamar Silver Alu Metalx MXT003

Solid Surface Top:

Tablet orders of 5 or less have 4 standard Corian colors:

- Bone
- Canyon
- Glacier White
- Silver Grey



OPTIONS

Add upcharge to list price and code to model number

FR	CAL 133 (TB 133) Fire Retardant per yard	\$118	/yd.
MB	MB -Moisture Barrier (up to 60" overall width)	\$164	ea.
MB60	Moisture Barrier (over 60" overall width)	\$262	ea.
2FO	Two fabric option	\$131	
GD2	Flat Ganging Device for Soft Seating	\$112	per pair
AHG	Metal Hand Grip - per seat (Powder Coat or Polished Chrome)	\$197	

CAS3	3" Locking Casters - Black	\$34	ea.
TABF-()	Fixed Post Tablet (outside, specify (L/R), shape A, B or C)	\$593	
SST	Solid Surface Tablet Arm - add to tablet option	\$172	
LAM5	Non-standard laminate (5 tablets or less)	\$342	ea. tablet
SS5	Non-standard Solid Surface (5 tablets or less)	Call For Quote	

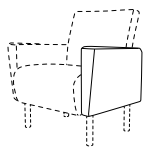
DIMENSIONS	Single Seat
Seat Width:	22"
Seat Depth:	20"
Seat Height:	17.5"
Arm Height:	25.5"
Back Height:	33"
Overall Width:	27"
Overall Depth:	28"
Qty./Wt.:	1 ea./65 lbs.



UPHOLSTERED ARMS

NOTE: Left or Right Arm is determined when seated on product. Arms are factory installed.

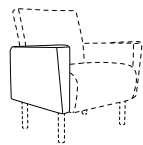
MODEL / DESCRIPTION / LIST PRICING



Left Outside Arm Upholstered Square

621L Ashton Square Left Outside Arm

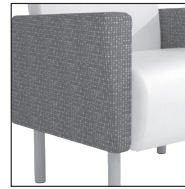
COM Yardage 2 Yds.



Right Outside Arm Upholstered Square

621R Ashton Square Right Outside Arm

COM Yardage 2 Yds.



UPHOLSTERED SQUARE ARM

Upholstered Square Arm - Right or Left
\$700 COM

621L/R Ashton Square Outside Arm - Left/Right

COM Yardage: 2.0 Yds.

COM	GR1	GR2	GR3	GR4	GR5	GR6	GR7	GR8	GR9	GR10	LEA
\$700	\$749	\$780	\$810	\$845	\$876	\$911	\$948	\$985	\$1025	\$1067	\$1259

TABLET SHAPES

Three Tablet Shapes::

Choose from the three shapes shown and specify; A, B or C and left or right (outside tablet) when ordering.

Example: TAB- (A) Left - this would be a fixed shape A tablet on the left side (when seated).

Laminate Top:

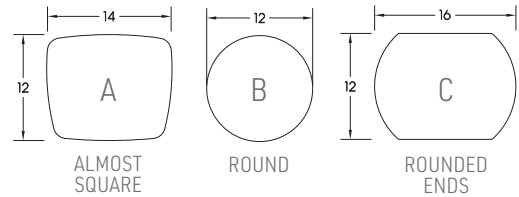
Tablet orders of 5 or less have 4 standard laminate colors:

- Wilsonart Black 1595-60
- Wilsonart Montana Walnut 7110K-78
- Formica Brite White 459-58
- Nevamar Silver Alu Metalx MXT003

Solid Surface Top:

Tablet orders of 5 or less have 4 standard Corian colors:

- Bone
- Canyon
- Glacier White
- Silver Grey



OPTIONS

Add upcharge to list price and code to model number

FR	CAL 133 (TB 133) Fire Retardant per yard	\$118	/yd
MB	MB -Moisture Barrier (up to 60" overall width)	\$164	ea.

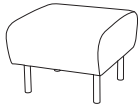
2FO	Two fabric option	\$131	
TAB-()	Swivel Tablet (specify A, B or C, left or right arm)	\$653	

DIMENSIONS	Ottoman	Two Seat	Three Seat
Overall Depth:	26"	26"	26"
Overall Width:	22"	45"	68"
Overall Height:	18"	18"	18"
Qty/Wt per carton	1 ea. 25 lbs	1 ea. 50 lbs	1 ea. 75 lbs



ASHTON TWO-SEAT BENCH

MODEL / DESCRIPTION / LIST PRICING



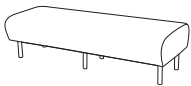
601 Single Seat Bench/Ottoman COM Yardage: Total: 1.75 Yds.

COM	GR1	GR2	GR3	GR4	GR5	GR6	GR7	GR8	GR9	GR10	LEA
\$1356	\$1452	\$1509	\$1569	\$1631	\$1696	\$1766	\$1836	\$1908	\$1984	\$2065	\$2442



605 Two Seat Bench COM Yardage: Total: 2.5 Yds.

COM	GR1	GR2	GR3	GR4	GR5	GR6	GR7	GR8	GR9	GR10	LEA
\$2127	\$2277	\$2367	\$2461	\$2559	\$2662	\$2768	\$2882	\$2995	\$3114	\$3237	\$3830



611 Three-Seat Bench COM Yardage: Total: 3.5 Yds.

COM	GR1	GR2	GR3	GR4	GR5	GR6	GR7	GR8	GR9	GR10	LEA
\$3029	\$3244	\$3371	\$3506	\$3645	\$3794	\$3944	\$4102	\$4268	\$4438	\$4616	\$5454



Ashton Benches coordinate with Ashton Lounge.

OPTIONS

Add upcharge to list price and code to model number

FR	CAL 133 (TB 133) Fire Retardant per yard	\$118	/yd
MB	MB -Moisture Barrier (up to 60" overall width)	\$164	ea.

MB60	Moisture Barrier (over 60" overall width)	\$262	ea.
SBH	Special Height	\$386	