

**ABBY**

Abby collection of café and training tables offers the ability to sit-and-stand at your table while you work. The options include flip tops, casters and radius corners. With its adjustable height and modern design, this high-tech look is a perfect fit for any mobile training space.



ROUND CAFÉ TABLE



TRAINING TABLE

**ORDERING INFORMATION**

- |                            |                               |
|----------------------------|-------------------------------|
| 1) Series Name             | 6) Laminate Selection and No. |
| 2) Model Number            | 7) Edge Style Code and Color  |
| 3) Size                    | 8) Optional Items             |
| 4) Quantity                |                               |
| 5) Powder Coat Frame Color |                               |

**BASE SPECIFICATIONS**

**Table Height:** Optional adjustable height varies depending on adjustment method specified. Pin or Pneumatic adjustment available on X-Base or T-Base tables.

**Column:** 3" square 14 gauge steel tubing welded to base and top plate

**X-Base:** 1.25", 14 gauge round tubular steel and .1875" flat plate steel

**T-Base:** Fully welded steel legs with modern design

**Top Plate:** 8" x 8" plate welded to column

**Glides:** 2" adjustable black plastic glides

**Assembly:** Top plate is welded to the vertical column and the vertical column is welded to the horizontal base. No tie rod assembly. Base mounts to tabletop with 1/4"-20 x 1" machine screws into metal inserts in top.

**STANDARD BASE FINISHES**

**X-Base & T-Base: Standard Powder Coat**

- ERG Brushed Aluminum
- ERG Argento Metallic

**TABLE TOP SPECIFICATIONS**

**Table Tops**

Table top core is CARB Phase I & Phase II Compliant. Laminate, wood veneer and phenolic backing are glued with water based adhesives.

**COLOR / EDGE SELECTIONS**

**Laminate/Veneer Selections**

ERG offers over 1000 standard laminate choices from Nevamar, Wilsonart, Formica and Pionite. Wood veneer is available in transparent stain colors - custom stain matching available for an upcharge.

**Edge Selections**

ERG offers a wide variety of table top edge materials including PVC, wood, aluminum and resin/urethane.

Special Edge Note: When ganging or butting tables together, ERG recommends using 3MM flat edge or flat wood edge. Square tables using **T-MOLD** edge will have a 3" radius on all corners.

**OPTIONS**

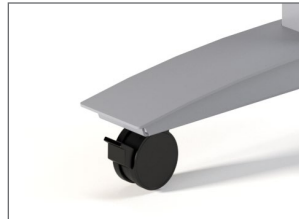
- CODE: FLIP-X - Flip Top per X-base (can not be used with height adjustable tables)
- CODE: FLIP-T - Flip Top for two T-Legs
- CODE: CAS2 - 2" Locking Casters - Black
- CODE: DCL - C-Legs instead of T-Legs  
(Adjustable height options not available on C-Legs)
- CODE: GD3 - Flat Ganging Device for Café & Training Tables
- CODE: RAD - 3" Radius Corners for 3MM Edge
- CODE: ASB - Anti-Sag Bar for Tables Under 72"
- CODE: PINLT - Pin Height Adjustment for T-Legs
- CODE: PINLA - Pin Height Adjustment for X-Base
- CODE: PNEUX - Pneumatic Height Adjustment for X-Base
- CODE: HCA - Hand Crank Height Adjustment for T-Legs
- CODE: EPLA - Electric Height Adjustment for T-Legs



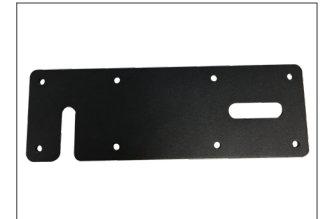
FLIP TOP FOR X BASE



FLIP TOP FOR TWO T-LEGS



2" MOBILE CASTERS



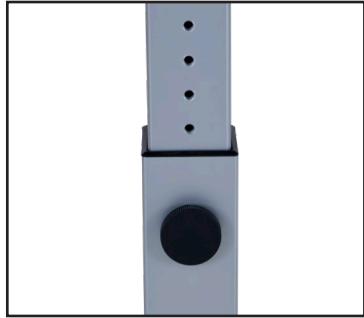
FLAT GANGING DEVICE

**Notes:**

**Flip-Top Mechanism**

Durable all-steel construction with a spring-loaded release handle and a safety catch to maintain flipped-up position. **All flip-top tables must have casters.**

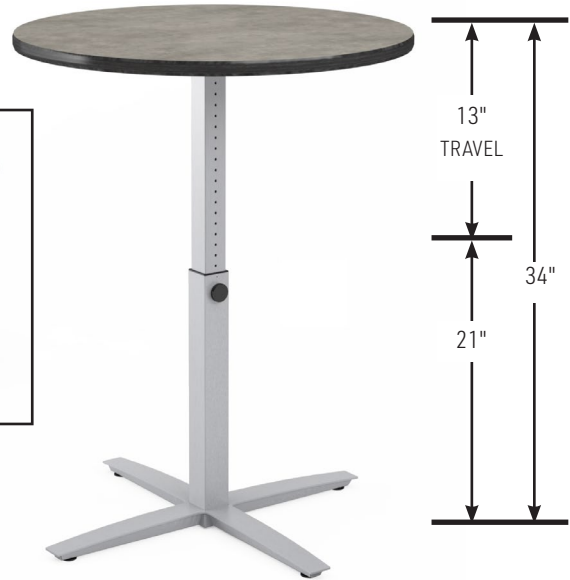
**PIN HEIGHT ADJUSTMENT OPTION**



PIN HEIGHT ADJUSTMENT  
DETAIL



CAFÉ TABLE WITH OPTIONAL  
PIN HEIGHT ADJUSTMENT



NOTE: HEIGHT INCLUDES 1.25" TABLE TOP.  
CASTERS WILL ADD 2" TO HEIGHT.

**PNEUMATIC HEIGHT ADJUSTMENT OPTION**



NOTE: HEIGHT INCLUDES 1.25" TABLE TOP.  
CASTERS WILL ADD 2" TO HEIGHT.



CAFÉ TABLE WITH OPTIONAL  
PNEUMATIC HEIGHT ADJUSTMENT



PNEUMATIC HEIGHT ADJUSTMENT  
LEVER DETAIL

NOTE: Pneumatic / Flip can not be used on same table

**HAND CRANK HEIGHT ADJUSTMENT OPTION**

NOTE: THE HAND CRANK OPTION IS NOT COMPATIBLE WITH THE FLIP TOP OPTION.



TRAINING TABLE WITH OPTIONAL HAND CRANK HEIGHT ADJUSTMENT

NOTE: HEIGHT INCLUDES 1.25" TABLE TOP

**ELECTRIC HEIGHT ADJUSTMENT OPTION**



NOTE: HEIGHT INCLUDES 1.25" TABLE TOP

TRAINING TABLE WITH OPTIONAL ELECTRIC HEIGHT ADJUSTMENT AND SNAP ON WIRE MANAGEMENT

ELECTRIC UP / DOWN CONTROL DETAIL



SQUARE CAFÉ TABLE

**MODEL / DESCRIPTION / LIST PRICING**

**ABBY|X-BASECAFÉ|ROUNDTOP**



**ROUND**

Model Number	Table Top Size	Base Spread	Table Height	Shpg. Wght.	LAMINATE TOP ASSORTED EDGES							VENEER TOP	
					GRP1	GRP2	GRP3	GRP4	GRP5	GRP6	GRP7	GRP8	GRP9
AB24D	24" Dia.	23"-X	29"	32	\$1288	\$1325	\$1460	\$1696	\$1714	\$1918	\$2161	\$3121	\$3627
AB30D	30" Dia.	29"-X	29"	43	\$1342	\$1380	\$1520	\$1767	\$1785	\$1998	\$2249	\$3250	\$3780
AB36D	36" Dia.	35"-X	29"	53	\$1513	\$1555	\$1727	\$2036	\$2054	\$2311	\$2616	\$3702	\$4264
AB42D	42" Dia.	35"-X	29"	72	\$1635	\$1688	\$1901	\$2294	\$2312	\$2626	\$3003	\$4081	\$4599

**ABBY | X-BASE CAFÉ | SQUARE TOP**



**SQUARE**

Model Number	Table Top Size	Base Spread	Table Height	Shpg. Wght.	LAMINATE TOP ASSORTED EDGES							VENEER TOP	
					GRP 1	GRP 2	GRP 3	GRP 4	GRP 5	GRP 6	GRP 7	GRP 8	GRP 9
AB24S	24" Sq.	23"- X	29"	40	\$1288	\$1325	\$1460	\$1696	\$1714	\$1918	\$2161	\$3121	\$3627
AB2430S	24" x 30"	29"- X	29"	49	\$1274	\$1305	\$1430	\$1639	\$1657	\$1844	\$2069	\$3052	\$3587
AB30S	30" Sq.	29"- X	29"	54	\$1342	\$1380	\$1520	\$1767	\$1785	\$1998	\$2249	\$3250	\$3780
AB36S	36" Sq.	35"- X	29"	67	\$1527	\$1575	\$1750	\$2070	\$2088	\$2351	\$2668	\$3751	\$4305
AB42S	42" Sq.	35"- X	29"	90	\$1551	\$1603	\$1807	\$2185	\$2203	\$2507	\$2869	\$3880	\$4364

NOTE: Flip-top can only be ordered with casters

NOTE: Fliptop X- base tables with casters in bar & counter height max 36" D or 36" S

NOTE: Pneumatic / Flip can not be used on same table

NOTE: AB24D and AB24S cannot be offered with the pin height

**OPTIONS**

Add upcharge to list price and code to model number

FLIP-X	Flip-Top per X-base (up to 42" top maximum)	\$203	per table
CAS2	2" Locking Casters - Black	\$28	ea.
GD3	Flat Ganging Device for Café & Training Tables	\$144	per pair
RAD	3" Radius Corners for 3MM Edge	\$262	per table

PINLA	Pin Height Adjust (X-Base)	\$215	per table
PNEUX	Pneumatic Height Adjust (X-Base, Max 36D/36S)	\$820	per table



**MODEL / DESCRIPTION / LIST PRICING**

**ABBY|TRAINING|T-LEGS|RECTANGLETOP**

**RECTANGLE**

Model Number	Table Top Size	Table Height	Base Spread	Shpg. Wght.	LAMINATE TOP ASSORTED EDGES								VENEER TOP	
					GRP1	GRP2	GRP3	GRP4	GRP5	GRP6	GRP7	GRP8	GRP9	
AB2448	24X48	29"	23"-T	70	\$1774	\$1868	\$2031	\$2304	\$2322	\$2569	\$2862	\$4294	\$5078	
AB2460	24X60	29"	23"-T	79	\$1855	\$1960	\$2145	\$2472	\$2490	\$2768	\$3102	\$4550	\$5319	
AB2472	24X72	29"	23"-T	88	\$1961	\$2072	\$2284	\$2668	\$2685	\$3005	\$3389	\$4855	\$5617	
AB2484	24X84	29"	23"-T	97	\$2210	\$2334	\$2574	\$3005	\$3023	\$3384	\$3814	\$5466	\$6329	
AB3048	30X48	29"	29"-T	79	\$1883	\$1984	\$2172	\$2491	\$2509	\$2786	\$3116	\$4598	\$5396	
AB3060	30X60	29"	29"-T	90	\$1990	\$2104	\$2320	\$2707	\$2725	\$3046	\$3433	\$4927	\$5703	
AB3072	30X72	29"	29"-T	102	\$2089	\$2212	\$2454	\$2896	\$2914	\$3272	\$3703	\$5218	\$5991	
AB3084	30X84	29"	29"-T	113	\$2414	\$2561	\$2849	\$3389	\$3407	\$3840	\$4361	\$6066	\$6919	

NOTE: Flip-top can only be ordered with casters

NOTE: Fliptop tables with casters in counter & bar height available in depth ranges 24"-36" only  
Max Length up 72" - Not available with C-legs

NOTE: Pneumatic / Flip can not be used on same table

NOTE: Casters will be 1.5" on X-Base with Flip Top

**OPTIONS**

Add upcharge to list price and code to model number

FLIP-T	Flip-Top for two T-legs	\$468	per table
ASB	Anti-Sag Bar for tables under 72"	\$105	per table
CAS2	2" Locking Casters - Black	\$28	ea.
DCL	C-Legs instead of T-Legs	\$79	per table
GD3	Flat Ganging Device for Café & Training Tables	\$144	per pair

RAD	3" Radius Corners for 3 MM Edge	\$262	per table
PINLT	Pin Height Adjust (T-Legs)	\$372	per table
HCA	Hand Crank Height Adjust (T-Legs)	\$707	per table
EPLA	Electric Height Adjust (T-Legs)	\$1419	per table