

ARCHER

Archer tables combine the best of form and function into one of our most durable and stylish models. Archer is perfect for a variety of applications from training to public spaces and dining. The fully welded arched base design is available in all of our standard powder coat finishes and makes integrating technology a breeze.



ROUND CAFÉ TABLE



TRAINING TABLE SHOWN WITH
OPTIONAL CASTERS

ORDERING INFORMATION

- | | |
|----------------------------|-------------------------------|
| 1) Series Name | 6) Laminate Selection and No. |
| 2) Model Number | 7) Edge Style Code and Color |
| 3) Size | 8) Optional Items |
| 4) Quantity | |
| 5) Powder Coat Frame Color | |

BASE SPECIFICATIONS

- Column:** 2" or 2.5" square 14 gauge steel tubing
- Base:** 1" x 2" 14 gauge steel arched rectangular tubing
- Plate:** 8" x 8" square, 10" x 10" square, 12" X 12" square, 14" X 14" square, 24" x 24" square
- Glides:** Black adjustable self-leveling swivel glides
- Assembly:** Top plate is welded to the vertical column and the vertical column is welded to the horizontal base plate. No tie rod assembly. Base mounts to tabletop with 1/4"-20 x 1" machine screws into metal inserts in top.

STANDARD BASE FINISHES

- X-Base:** Standard Powder Coat
- T-Base:** Standard Powder Coat



GLIDE DETAIL

TABLE TOP SPECIFICATIONS

Table Tops

Table top core is CARB Phase I & Phase II Compliant. Laminate, wood veneer and phenolic backing are glued with water based adhesives

Ultra-Lightweight Table Tops

Ultra-lightweight tables have an exceptionally strong manufactured MDF top made from 100% recovered and recycled wood fiber with at least 25% post-industrial recycled fiber; the balance consisting of recovered waste fiber. Ultra-light tables are 18% lighter than standard tables.

COLOR / EDGE SELECTIONS

Laminate/Veneer Selections

ERG offers over 1000 standard laminate choices from Nevamar, Wilsonart, Formica and Pionite. Wood veneer is available in transparent stain colors - custom stain matching available for an upcharge.

Edge Selections

ERG offers a wide variety of table top edge materials including PVC, wood, aluminum and resin/urethane. Special Edge Note: When ganging or butting tables together, ERG recommends using 3MM flat edge or flat wood edge. Square tables using **T-MOLD** edge will have a 3" radius on all corners.

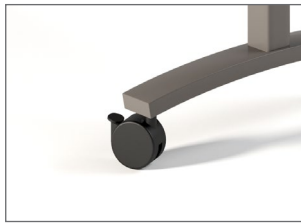
OPTIONS

- CODE: FLIP-T - Flip Top for two T-legs
- CODE: FLIP-X - Flip Top per X-base
- CODE: FOLD - Lightweight Folding Leg Mechanism per table
- CODE: ASB - Anti-Sag Bar for tables under 72"
- CODE: STH - Special Table Height (other than 29")
- CODE: CAS3 - 3" Locking Casters - Black
- CODE: GD3 - Flat Ganging Device for Café & Training Tables
- CODE: RAD - 3" Radius Corners for 3MM Edge
- CODE: FTBH - Flip top support bar for rectangular bar height tables
(Maximum table top size 30x72)

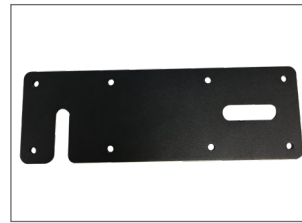
Note: When ordering modesty panel, table and panel must have 3MM edge.



FLIP TOP FOR TWO T-LEGS



3" LOCKING CASTERS



FLAT GANGING DEVICE

NOTE: CASTERS ONLY AVAILABLE ON T-LEG BASE

Notes:

Flip-Top Mechanism

Durable all-steel construction with a spring-loaded release handle and a safety catch to maintain flipped-up position.

Folding Mechanism

Nylon injection molded housing, cast aluminum pivot and metal locking slider. Rigid, taper locking design is activated by single lever that also locks in folded position.



SQUARE CAFÉ TABLE

MODEL / DESCRIPTION / LIST PRICING

ARCHER | CAFÉ | ROUND

Model Number	Table Top Size	Base Spread	Table Height	Shpg. Wght.	LAMINATE TOP ASSORTED EDGES							VENEER TOP	
					GRP 1	GRP 2	GRP 3	GRP 4	GRP 5	GRP 6	GRP 7	GRP 8	GRP 9
AH24D	24" Dia.	22"- X	29"	32	\$1032	\$1050	\$1172	\$1397	\$1415	\$1583	\$1781	\$2549	\$2943
AH30D	30" Dia.	26"- X	29"	43	\$1135	\$1161	\$1323	\$1637	\$1655	\$1874	\$2141	\$2892	\$3246
AH36D	36" Dia.	32"- X	29"	53	\$1392	\$1419	\$1613	\$2000	\$2018	\$2285	\$2604	\$3535	\$3974
AH42D	42" Dia.	32"- X	29"	72	\$1611	\$1646	\$1902	\$2420	\$2438	\$2781	\$3199	\$4182	\$4604
AH48D	48" Dia.	38"- X	29"	86	\$1764	\$1809	\$2117	\$2754	\$2772	\$3191	\$3697	\$4671	\$5043

ARCHER | CAFÉ | SQUARE

Model Number	Table Top Size	Base Spread	Table Height	Shpg. Wght.	LAMINATE TOP ASSORTED EDGES							VENEER TOP	
					GRP 1	GRP 2	GRP 3	GRP 4	GRP 5	GRP 6	GRP 7	GRP 8	GRP 9
AH24S	24" Sq.	22"- X (Bar 26"- X)	29"	40	\$999	\$1030	\$1150	\$1361	\$1379	\$1556	\$1766	\$2444	\$2775
AH30S	30" Sq.	26"- X	29"	54	\$1143	\$1168	\$1329	\$1646	\$1664	\$1883	\$2147	\$2911	\$3268
AH36S	36" Sq.	32"- X	29"	67	\$1411	\$1436	\$1640	\$2038	\$2056	\$2330	\$2660	\$3588	\$4024
AH42S	42" Sq.	38"- X	29"	90	\$1560	\$1601	\$1852	\$2370	\$2388	\$2737	\$3151	\$4076	\$4459
AH48S	48" Sq.	38"- X	29"	107	\$1671	\$1715	\$2008	\$2615	\$2633	\$3034	\$3514	\$4432	\$4783

ARCHER | CAFÉ | RECTANGLE

Model Number	Table Top Size	Base Spread	Table Height	Shpg. Wght.	LAMINATE TOP ASSORTED EDGES							VENEER TOP	
					GRP 1	GRP 2	GRP 3	GRP 4	GRP 5	GRP 6	GRP 7	GRP 8	GRP 9
AH2430S	24x30	22"- X	29"	49	\$1106	\$1128	\$1274	\$1562	\$1579	\$1780	\$2019	\$2788	\$3155
AH2448	24x48	2-22"- T	29"	70	\$1296	\$1323	\$1512	\$1888	\$1906	\$2168	\$2478	\$3316	\$3697
AH2460	24x60	2-22"- T	29"	79	\$1358	\$1389	\$1603	\$2028	\$2046	\$2339	\$2688	\$3520	\$3882
AH3048	30x48	2-22"- T	29"	84	\$1366	\$1397	\$1612	\$2047	\$2065	\$2359	\$2710	\$3544	\$3903
AH3060	30x60	2-22"- T	29"	90	\$1445	\$1481	\$1720	\$2220	\$2238	\$2565	\$2966	\$3795	\$4127

NOTE: CASTERS ONLY AVAILABLE ON T-LEG BASE

OPTIONS

Add upcharge to list price and code to model number

FLIP-T	Flip-Top for two T-legs	\$468	per table
FLIP-X	Flip-Top per X-base (up to 42" top maximum)	\$203	per table
FOLD	Lightweight Folding Leg Mechanism per table	\$390	per table
ASB	Anti-Sag Bar for tables under 72"	\$105	per table

STH	Special Table Height (other than 29")	\$197	per leg
CAS3	3" Mobile Casters (2 Casters per T-leg)	\$34	ea.
GD3	Flat Ganging Device for Café & Training Tables	\$144	per pair
RAD	3" Radius Corners for 3MM Edge	\$262	per table



ROUND CAFÉ BAR HEIGHT TABLE

MODEL / DESCRIPTION / LIST PRICING

ARCHER | BAR HEIGHT | ROUND

Model Number	Table Top Size	Base Spread	Table Height	Shpg. Wght.	LAMINATE TOP ASSORTED EDGES							VENEER TOP	
					GRP 1	GRP 2	GRP 3	GRP 4	GRP 5	GRP 6	GRP 7	GRP 8	GRP 9
AHH24D	24" Dia.	22"- X	42"	40	\$1296	\$1335	\$1490	\$1840	\$1918	\$2203	\$2592	\$3370	\$3759
AHH30D	30" Dia.	26"- X	42"	50	\$1397	\$1438	\$1606	\$1983	\$2067	\$2374	\$2793	\$3632	\$4050
AHH36D	36" Dia.	32"- X	42"	63	\$1656	\$1704	\$1904	\$2350	\$2450	\$2813	\$3310	\$4304	\$4801

ARCHER | BAR HEIGHT | SQUARE

Model Number	Table Top Size	Base Spread	Table Height	Shpg. Wght.	LAMINATE TOP ASSORTED EDGES							VENEER TOP	
					GRP 1	GRP 2	GRP 3	GRP 4	GRP 5	GRP 6	GRP 7	GRP 8	GRP 9
AHH36S	36" Sq.	32"- X	42"	67	\$1675	\$1725	\$1926	\$2378	\$2478	\$2847	\$3349	\$4354	\$4856

Note: Other bar height sizes available. Call for pricing.

OPTIONS

Add upcharge to list price and code to model number

FLIP-T	Flip-Top for two T-legs	\$468	per table	STH	Special Table Height (other than 29")	\$197	per leg
FLIP-X	Flip-Top per X-base (up to 42" top maximum)	\$203	per table	GD3	Flat Ganging Device for Café & Training Tables	\$144	per pair
FOLD	Lightweight Folding Leg Mechanism per table	\$390	per table	RAD	3" Radius Corners for 3MM Edge	\$262	per table
ASB	Anti-Sag Bar for tables under 72"	\$105	per table	FTBH	All T-base bar height tables with flip top	\$392	per table



RECTANGLE TRAINING TABLE

MODEL / DESCRIPTION / LIST PRICING

ARCHER | TRAINING | RECTANGLE

Model Number	Table Top Size	Base Spread	Table Height	Shpg. Wght.	LAMINATE TOP ASSORTED EDGES								VENEER TOP	
					GRP 1	GRP 2	GRP 3	GRP 4	GRP 5	GRP 6	GRP 7	GRP 8	GRP 9	
AH2436	24 X 36	2-22"- T	29"	61	\$1231	\$1255	\$1421	\$1747	\$1764	\$1993	\$2269	\$3108	\$3508	
AH2448	24 X 48	2-22"- T	29"	70	\$1296	\$1323	\$1512	\$1888	\$1906	\$2168	\$2478	\$3316	\$3697	
AH2460	24 X 60	2-22"- T	29"	79	\$1358	\$1389	\$1603	\$2028	\$2046	\$2339	\$2688	\$3520	\$3882	
AH2472	24 X 72	2-22"- T	29"	88	\$1591	\$1623	\$1858	\$2330	\$2348	\$2670	\$3057	\$4074	\$4537	
AH2484	24 X 84	2-22"- T	29"	97	\$1686	\$1729	\$1996	\$2545	\$2563	\$2932	\$3372	\$4387	\$4821	
AH2496	24 X 96	2-22"- T	29"	106	\$1794	\$1833	\$2130	\$2726	\$2744	\$3142	\$3618	\$4681	\$5125	
AH3036	30 X 36	2-22"- T	29"	68	\$1288	\$1314	\$1504	\$1876	\$1894	\$2153	\$2459	\$3292	\$3678	
AH3048	30 X 48	2-22"- T	29"	79	\$1366	\$1397	\$1612	\$2047	\$2065	\$2359	\$2710	\$3544	\$3903	
AH3060	30 X 60	2-22"- T	29"	90	\$1445	\$1481	\$1720	\$2220	\$2238	\$2565	\$2966	\$3795	\$4127	
AH3072	30 X 72	2-22"- T	29"	102	\$1688	\$1729	\$1997	\$2546	\$2564	\$2933	\$3373	\$4394	\$4824	
AH3084	30 X 84	2-22"- T	29"	113	\$1803	\$1845	\$2156	\$2790	\$2808	\$3229	\$3739	\$4747	\$5144	
AH3096	30 X 96	2-22"- T	29"	124	\$1919	\$1965	\$2303	\$3001	\$3019	\$3477	\$4027	\$5085	\$5486	

ARCHER | TRAINING | SECTIONAL | HALF ROUND

Model Number	Table Top Size	Base Spread	Table Height	Shpg. Wght.	LAMINATE TOP ASSORTED EDGES								VENEER TOP	
					GRP 1	GRP 2	GRP 3	GRP 4	GRP 5	GRP 6	GRP 7	GRP 8	GRP 9	
AHHR3060	30 X 60	2-22"- T	29"	90	\$1854	\$1910	\$2298	\$3122	\$3140	\$3665	\$4297	\$5108	\$5313	

ARCHER | BAR HEIGHT AND COUNTER HEIGHT AVAILABLE

Note: Use STH option code to order bar height tables

Note: Fliptop tables with casters in counter & bar height available in depth ranges 24"-36" only

Max Length up 72" - Not available with C-legs.

All training tables that are 18" deep with flip and casters options, cannot be specified with modesty panels.

OPTIONS

Add upcharge to list price and code to model number

FLIP-T	Flip-Top for two T-legs	\$468	per table	CAS3	3" Mobile Casters (2 Casters per T-leg)	\$34	ea.
FOLD	Lightweight Folding Leg Mechanism per table	\$390	per table	GD3	Flat Ganging Device for Café & Training Tables	\$144	per pair
ASB	Anti-Sag Bar for tables under 72"	\$105	per table	RAD	3" Radius Corners for 3MM Edge	\$262	per table
STH	Special Table Height (other than 29")	\$197	per leg	FTBH	All T-base bar height tables with flip top	\$392	per table