

ERG

INTERNATIONAL

GRADED-IN FABRIC COORDINATES





FEDORA
621-046 Light Grey



621-019
Tangelo



621-013
Citron



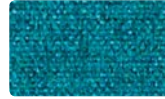
621-007
Winter



621-056
Dew



621-001
Ruby



621-053
Aegean



621-017
Fawn



621-026
Pewter



621-008
Plum



621-014
Indigo



621-000
Mink



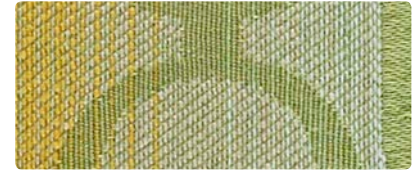
621-006
Bitumen



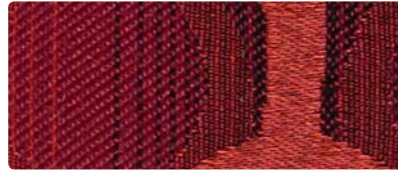
ALIGN
398-007 Sea Salt



398-009
Fruit Punch



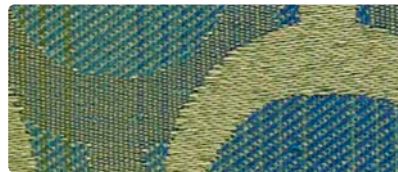
398-003
Limeade



398-001
Cardinal



398-014
Moody Blue



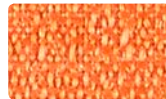
398-013
Oasis



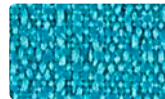
398-000
Honeycomb



CONTINUUM
422-007 Cafe Au Lait



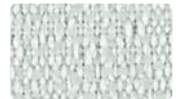
422-009
Mandarin



422-044
Ocean



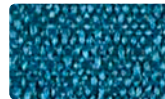
422-003
Spring



422-026
Dove



422-001
Lipstick



422-024
Caribbean



422-027
Stone



422-036
Iron



422-008
Beet



422-004
Indigo



422-000
Espresso



422-006
Onyx



RANCHERO
RC-009 Sepia



RC-001
Lipstick



RC-008
Brandy



RC-004
Sapphire



RC-014
Navy



RC-003
Basil

Additional colors are available. Please refer to the Mayer Fabrics website.



FLORENTINO
FT-027 Khaki



FT-029
Mango



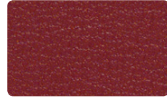
FT-033
Willow



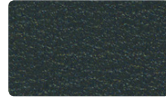
FT-017
Biscuit



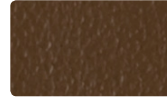
FT-026
Dove



FT-001
Scarlet



FT-014
Marine



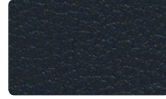
FT-030
Mocha



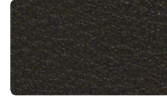
FT-016
Slate



FT-008
Plum



FT-004
Sapphire



FT-000
Sable



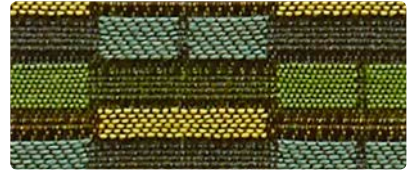
FT-006
Jet



PATIO
420-007 Vellum



420-009
Coral Reef



420-003
Jungle



420-024
Aquatint



420-000
Basket



420-004
Oceanic



420-006
Slate



LAVISH
WC969-007 Ecru



WC969-009
Ember



WC969-003
Avocado



WC969-002
Sunflower



WC969-026
Cloud



WC969-001
Crimson



WC969-014
Turquoise



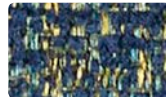
WC969-010
Pecan



WC969-016
Thunder



WC969-005
Wildberry



WC969-004
Lagoon



WC969-000
Mocha



WC969-006
Graphite



RANCHERO
RC-020 Driftwood



RC-000
Chocolate



RC-010
Greige



RC-036
Nickel



RC-016
Thunder



RC-006
Black

Additional colors are available. Please refer to the Mayer Fabrics website.

TECHNICAL INFORMATION

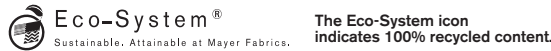
Graded-In Fabric Coordinates

| Pattern 54" | Content and Backing | Certifications | Weight/ Linear Yd. | Pattern Repeat | Finish | Abrasion Wyzenbeek | Light-Fastness | Flammability | Cleaning Code |
|---|--|------------------------|--------------------|-----------------------|--|-------------------------|----------------|--|----------------|
| ALIGN <i>Directional</i> <i>Railroaded</i> | 100% Polyester Backing: Acrylic | GREENGUARD Gold | 15.392 oz. | 3.625" H, 4.375" V | Stain Repellent | 60,000 Double Rubs | 40 hours | Cal. 117-2013 NFPA 260/UFAC Class 1 | WS, BC |
| CONTINUUM <i>Directional</i> | 100% Post-Consumer Recycled Polyester Backing: Latex | GREENGUARD Gold | 15 oz. | 0.50" H, 0.59" V | Stain Repellent | 130,000^ Double Rubs | 40 hours | Cal. 117-2013 NFPA 260/UFAC Class 1 ASTM E84 (Unadhered) Class 1 or A | WS |
| FEDORA <i>Directional</i> | 100% Polyester Backing: Polyester Knit | GREENGUARD Gold | 15 oz. | None | Stain Repellent – PFOA Free | 100,000 Double Rubs | 40 hours | Cal. 117-2013 NFPA 260/UFAC Class 1 ASTM E84 (Unadhered) Class 1 or A | W |
| FLORENTINO | 86% Vinyl Phthalate (21P) Free face, 14% Polyester backing | GREENGUARD | 28 oz. | None | Soil & stain resistant topcoat with ink resistant technology | 651,000^ Double Rubs | 650 hours | Cal. 117-2013 NFPA 260/UFAC Class 1 BIFMA CS-191-53, Section 3 & 4 FMVSS 302 IMO FTP 2010 Part 8, 3.1,3.2 | WS, BC, CFC |
| LAVISH <i>Directional</i> | 100% Polyester Backing: Crypton® | GREENGUARD Gold | 22.98 oz. | None | Crypton® with Antimicrobial Silver Ion Technology | 79,000 Double Rubs | 40 hours | Cal. 117-2013 NFPA 260/UFAC Class 1 | C, BC |
| PATIO <i>Directional</i> | 100% Polyester Backing: Acrylic | GREENGUARD Gold | 15.504 oz. | 1.875" H, 1.25" V | Stain Repellent | 51,000 Double Rubs | 40 hours | Cal. 117-2013 NFPA 260/UFAC Class 1 | WS, BC |
| RANCHERO | 85% Vinyl face, 15% Polyester backing | GREENGUARD | 24.5 oz. | None | None | 250,000^ Double Rubs | 200 hours | Cal. 117-2013 NFPA 260/UFAC Class 1 FMVSS 302 | W |

REDUCED ENVIRONMENTAL IMPACT

These products are GREENGUARD Certified or GREENGUARD Gold Certified for low chemical and particle emissions to UL standard UL 2818 and may contribute to LEED certification. For complete information visit mayerfabrics.com and UL.com/gg.

Continuum



CARE AND CLEANING INFORMATION

C: Crypton® Cleaning W: Water Based Cleaner WS: Water/Solvent Cleaner

CFC: Coated Fabrics Cleaning – Refer to Mayer website for complete cleaning info.

BC: Bleach Cleanable – 1 part bleach, 9 parts water = 10% bleach, 90% water solution. Do not clean/disinfect fabric for longer than 10 minutes using the 10% bleach solution. Always rinse promptly with clean water after applying the bleach solution. Failure to do so will void any and all warranties.

Fedora cleaning disclaimer: **Do not use bleach or solvent-based cleaners.**

ADDITIONAL INFORMATION

Cal TB 133: All patterns may comply with California Technical Bulletin 133 when combined with appropriate components.

^Abrasion: Multiple factors affect fabric durability and appearance retention, including end-user application and proper maintenance. Wyzenbeek results above 100,000 double rubs have not been shown to be a reliable indicator of increased fabric lifespan.

Custom Capabilities: All patterns can be custom colored. Minimum yardage applies.

Digital Swatch Card Color Matching: Due to color variations on different monitors and color printers, actual swatch colors may vary slightly. Please request a memo sample from Mayer Fabrics to ensure proper color representation.

Specifications: Specifications are correct at the time of printing. Current detailed specifications are available on our website.

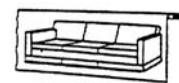
These fabrics meet or exceed these ACT performance guidelines. *Certification Marks owned by ACT*



Railroaded: This feature allows reduction of seams and enables smoother furniture tailoring.



Fabric "up the roll" or "regular" position

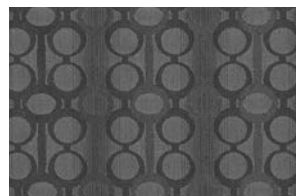


Fabric "railroaded" or "top selvage" position

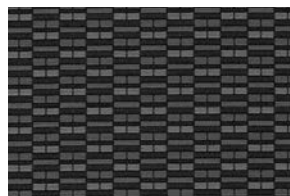
We recommend all railroaded patterns should be upholstered as shown on card.

Continuum

This 100% polyester fabric is included in the Underwriter's Laboratory Fabric Recognition Program. Additional testing of this U.L. recognized component is not required on approved panels from participating manufacturers.



ALIGN – Repeat: 3.625" H, 4.375" V
Shown Railroaded



PATIO – Repeat: 1.875" H, 1.25" V



MAYERFABRICS