

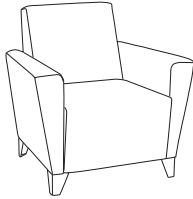
FLAIR



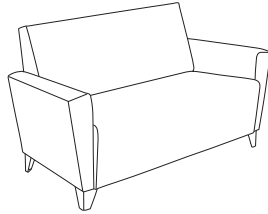


FLAIR

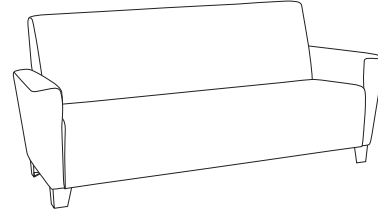
The Flair lounge is comprised of one, two and three-seat lounges with a wide arm at the top, that tapers down, giving it a nice flair in design. The myriad of options includes cupholders, back hand-grip, removeable tablet, casters and a laminated storage shelf. With all it has to offer, these lounges are substantial and work well in collaborative and common spaces.



3495



3498



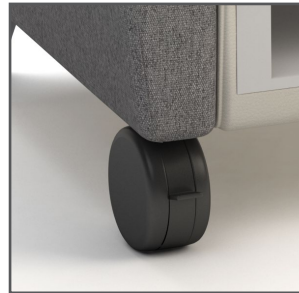
3499



HAND GRIP



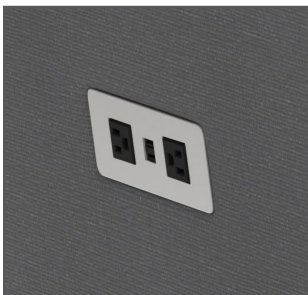
MAPLE WOOD LEGS



4" CASTERS



LAMINATED STORAGE SHELF



POWER / DATA



REMOVABLE TABLET



CUP HOLDER



ARM CAPS

ERG
INTERNATIONAL

www.ERGinternational.com