

DIXON

Dixon has four tabletop shapes along with round base shape, and offered in varied heights to accommodate any design with purpose. Whether it is a personal pull up table or a coffee table, it looks great in any simple lounge area needing that extra support.



PULL UP TABLE WITH ROUND TOP AND BASE, SHOWN WITH KNIFE EDGE



OCCASIONAL TABLE WITH ROUND TOP AND BASE

ORDER INFORMATION

- | | |
|-----------------|-------------------------------|
| 1) Series Name | 6) Laminate Selection and No. |
| 2) Model Number | 7) Edge Style Code and Color |
| 3) Size | 8) Wood Species |
| 4) Quantity | 9) Wood Stain Color |
| 5) Base Shape | 10) Optional Items |

BASE SPECIFICATIONS

Column: 2" diameter polished chrome.
Base: One round shape:
 RDB - 15" diameter round
Glides: Nylon glides
Assembly: Base mounts to tabletop with 1/4"-20 x 1" machine screws into metal inserts in top.
 NO WOOD SCREWS ARE USED.

STANDARD BASE FINISHES

Metal Base: Polished Chrome

OPTIONAL BASE FINISHES

Metal Base: Standard Powder Coat

TABLE TOP SPECIFICATIONS

Table Tops

Table top core is CARB Phase I & Phase II Compliant. Laminate, wood veneer and phenolic backing are glued with water based adhesives. Also available in solid surface and acrylic.

Shapes available in round, elliptical, square, rectangle, almost square and almost rectangle.

COLOR / EDGE SELECTIONS

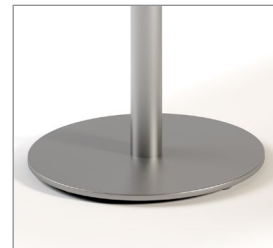
Laminate/Veneer Selections

ERG offers over 1000 standard laminate choices from Nevamar, Wilsonart, Formica and Pionite. Wood veneer is available in transparent stain colors - custom stain matching available for an upcharge.

OPTIONS

- CODE: SF - Powder Coat Finish

BASE SHAPE



15" ROUND - RDB



ROUND TOP AND BASE SHOWN WITH
6J KNIFE EDGE W/POLAR STAIN

MODEL / DESCRIPTION / LIST PRICING

DIXON | PULL UP | ROUND TOP



Model Number	Table Top Size	Table Height	Shpg. Weight	LAMINATE TOP EDGE 2B	LAMINATE TOP EDGE 3A	LAMINATE TOP EDGE 6-J/6Q	VENEER TOP EDGE 8G
DXLR16	16" dia.	26"	35 lbs.	\$992	\$1142	\$1562	\$1565
DXLR18	18" dia.	26"	40 lbs.	\$1007	\$1159	\$1567	\$1585
DXLR24	24" dia.	26"	45 lbs.	\$1127	\$1297	\$1720	\$1732

DIXON | PULL UP | ALMOST SQUARE TOP



Model Number	Table Top Size	Table Height	Shpg. Weight	LAMINATE TOP EDGE 2B	LAMINATE TOP EDGE 3A	LAMINATE TOP EDGE 6-J/6Q	VENEER TOP EDGE 8G
DXLR16AS	16"X16"	26"	35 lbs.	\$1141	\$1312	\$1795	\$1800
DXLR18AS	18"X18"	26"	40 lbs.	\$1158	\$1330	\$1808	\$1821
DXLR24AS	24"X24"	26"	45 lbs.	\$1296	\$1492	\$1959	\$1992

Call for pricing on other edge profiles and KrystalCast® or solid surface tops.

OPTIONS

Add upcharge to list price and code to model number

SF	Powder Coat Finish	\$79
----	--------------------	------



ROUND TOP AND ROUND BASE

MODEL / DESCRIPTION / LIST PRICING

DIXON | OCCASIONAL | ROUND TOP



Model Number	Table Top Size	Table Height	Shpg. Weight	LAMINATE TOP EDGE 2B	LAMINATE TOP EDGE 3A	LAMINATE TOP EDGE 6-J/6Q	VENEER TOP EDGE 8G
DXOR16	16" dia.	18"	35 lbs.	\$1066	\$1227	\$1555	\$1676
DXOR18	18" dia.	18"	40 lbs.	\$1081	\$1244	\$1565	\$1694
DXOR24	24" dia.	18"	45 lbs.	\$1216	\$1400	\$1723	\$1824

DIXON | OCCASIONAL | ALMOST SQUARE TOP



Model Number	Table Top Size	Table Height	Shpg. Weight	LAMINATE TOP EDGE 2B	LAMINATE TOP EDGE 3A	LAMINATE TOP EDGE 6-J/6Q	VENEER TOP EDGE 8G
DXOR16AS	16" x 16"	18"	35 lbs.	\$1227	\$1413	\$1791	\$1927
DXOR18AS	18" x 18"	18"	40 lbs.	\$1243	\$1430	\$1812	\$1947
DXOR24AS	24" x 24"	18"	45 lbs.	\$1398	\$1609	\$1981	\$2098

Call for pricing on other edge profiles and KrystalCast® or solid surface tops.

OPTIONS

Add upcharge to list price and code to model number

SF	Powder Coat Finish	\$79
----	--------------------	------