

ERG Graded in Fabric

Main Line Flax / Patina / Synergy

ERG Graded in Fabric
Main Line Flax

Photographic fabric scans are not color accurate. Always request actual fabric samples before ordering.



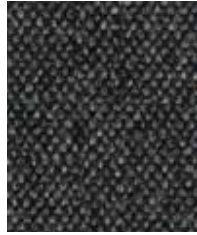
Upminster
MLF20



Archway
MLF02



Camden
MLF26



Temple
MLF16



Kensington
MLF07



Lambeth
MLF08



Morden
MLF12



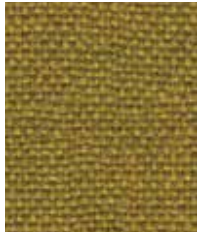
Bank
MLF23



Stockwell
MLF15



Tooting
MLF17



Goldhawk
MLF31



Finsbury
MLF30



Tufnell
MLF18



Farringdon
MLF29



Greenford
MLF32



Newbury
MLF10



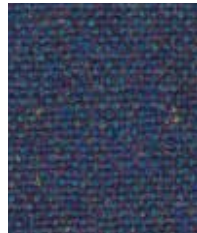
Bethnal
MLF25



Stanmore
MLF37



Pimlico
MLF34



Russell
MLF38



Brompton
MLF35



Waterloo
MLF21



Westminster
MLF22



Charing
MLF27



Highgate
MLF33



Victoria
MLF19



Tower
MLF36



Barbican
MLF03



Aldgate
MLF01



Parsons
MLF14



Wembley
MLF11



Northfields
MLF40

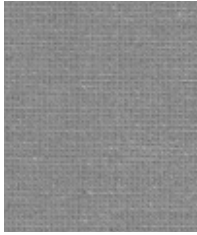


Edgware
MLF28

ERG Graded in Fabric

Photographic fabric scans are not color accurate. Always request actual fabric samples before ordering.

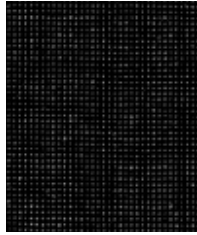
Patina



Layered
PAT12



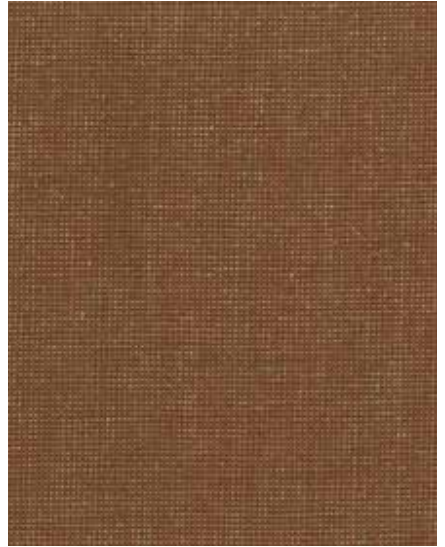
Chiselled
PAT24



Anneal
PAT35



Strata
PAT33



Matured
PAT10



Aged
PAT02



Stony
PAT34



Smudged
PAT30



Timeworn
PAT08



Lustre
PAT16



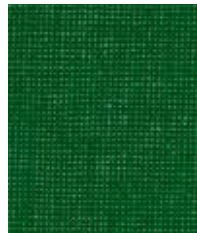
Imprint
PAT39



Meander
PAT21



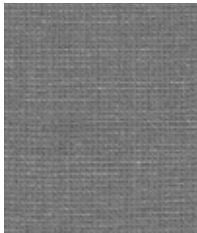
Temper
PAT28



Flecked
PAT38



Speckled
PAT41



Veneer
PAT04



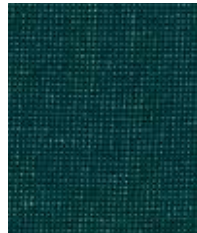
Weathered
PAT01



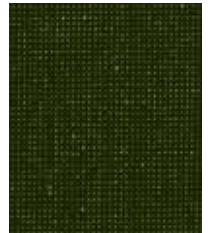
Languish
PAT31



Anodised
PAT32



Reclaimed
PAT05



Restored
PAT07



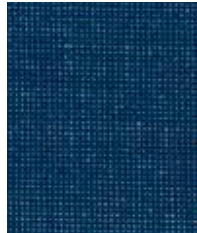
Engrave
PAT43



Tessellate
PAT22



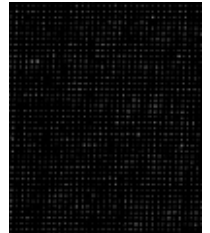
Salvaged
PAT06



Sheen
PAT17



Rippled
PAT19



Toughened
PAT20



Twisted
PAT36



Braise
PAT27



Blurred
PAT18



Lacquer
PAT42



Petrology
PAT29



Seasoned
PAT03

ERG Graded in Fabric
Synergy

Photographic fabric scans are not color accurate. Always request actual fabric samples before ordering.



Serendipity
LDS08



Partner
LDS16



Mix
LDS17



Compound
LDS25



Wed
LDS34



Level
LDS20



Affix
LDS32



Linea
LDS37



Collective
LDS39



Bracket
LDS23



Regard
LDS54



Pact
LDS53



Comply
LDS52



League
LDS50



Couple
LDS41



Kinship
LDS56



Support
LDS55



Engage
LDS57



Family
LDS58



Group
LDS59



Accord
LDS60



Venture
LDS05



Fellowship
LDS66



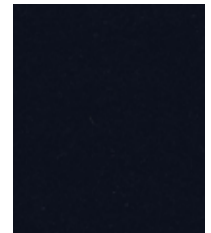
Warmth
LDS67



Collaborate
LDS68



Alike
LDS62



Sync
LDS69



Affinity
LDS74



Work
LDS73



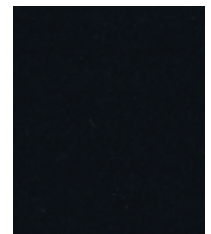
Global
LDS86



Values
LDS87



Process
LDS88



Seek
LDS27

Technical information



EN

Composition

Synergy: 95% Pure New Wool, 5% Nylon

Patina: 69% Wool, 22% Flax, 8% Nylon, 1% Viscose

Non metallic dyestuffs

Main Line Flax: 70% Pure New Wool, 30% Flax

Environmental

Synergy/Patina/Main Line Flax: Certified to the EU Ecolabel

Main Line Flax: Rapidly renewable and compostable Made from wool and bast fiber

Width

54 inches minimum

Weight

Synergy: 11^{3/4} oz/sq yd ±5% (17^{3/4} oz/running yd ±5%)

Patina: 9^{3/4} oz/sq yd ±5% (14^{1/2} oz/running yd ±5%)

Main Line Flax: 13oz/sq yd ±5% (19^{1/4} oz/running yd ±5%)

*Abrasion Resistance

Synergy: ASTM D4966 Martindale method, Heavy Duty Upholstery independently certified to ≥100,000 cycles.

Patina: ASTM D4966 Martindale method, Heavy Duty Upholstery independently certified to ≥100,000 cycles.

Main Line Flax: ASTM D4157 Wyzenbeek method.

Heavy Duty Upholstery independently certified to 100,000 double rubs.

Covered by a full and comprehensive 10 year guarantee

(full details available)

Flammability

California Technical Bulletin 117 - 2013

NFPA 260 + UFAC - Class 1

BS 7176 Low Hazard

Patina/Main Line Flax:

ASTM E84 Class 1 or A (Adhered)

ASTM E84 Class 2 or B (Un-adhered)

Synergy: ASTM E84 Class 2 or B (Adhered)

ASTM E84 Class 2 or B (Un-adhered)

Optional please specify when ordering:

Synergy: ASTM E84 Class 1 or A (Adhered) when FR treated

Note: Flammability performance is dependent on components used.

Light Fastness

AATCC-16 (40 hours) Class 4

Color Fastness to Crocking

AATCC-8 (Dry: 4, Wet: 3)

Cleaning code

W/S

Clean with a water-based cleaning agent or solvent: Depending on the stain, you can use a dry-cleaning solvent, the foam of a mild detergent, or upholstery shampoo.

*Camira recognizes that the number of Martindale cycles/Wyzenbeek double rubs do not reflect the actual wear performance of fabrics. We're so confident in the durability of our products that we provide a robust 10 year guarantee (full details available). This product is externally certified, details of which are on our website and available from our customer services team.

Multiple factors affect fabric durability and appearance retention, including end-user application and correct maintenance. Results above 100,000 cycles/double rubs have not been shown to be a reliable indicator of increased fabric lifespan.

Batch to batch variations in shade may occur within commercial tolerances. We reserve the right to alter technical specifications without notice. The Unregistered Design Rights and the Copyright in all designs are the exclusive property of Camira Fabrics Limited.

ERG International
361 Bernoulli Circle
Oxnard, CA, 93030, USA
Tel: 805-981-9978
Toll Free: 1-800-446-1186
Fax: 805-981-9878
Email: sales@erginternational.com
www.erginternational.com

For additional information or sample requests visit:

www.camirafabrics.com

Samples can also be requested by email at:

memos@camirafabrics.com

ERG
INTERNATIONAL

camira